

32

Square with sides of length 5

$$A = l \cdot w = 5 \cdot 5 = 25$$

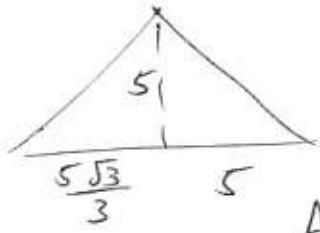
33

A parallelogram =  $b \cdot h$

$$= x \cdot (m)$$

$$A = mx$$

34

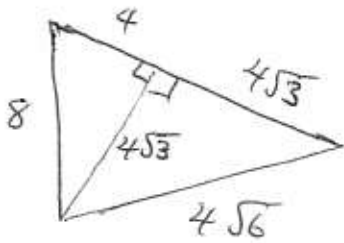


$$A = \frac{1}{2} b \cdot h$$

$$A = \frac{1}{2} \left( \frac{5\sqrt{3}}{3} + 5 \right) (5)$$

$$A = \underline{\hspace{2cm}}$$

35



$$A = \frac{1}{2} b \cdot h$$

$$= \frac{1}{2} (4 + 4\sqrt{3}) \cdot (4\sqrt{3})$$

$$A = \underline{\hspace{2cm}}$$