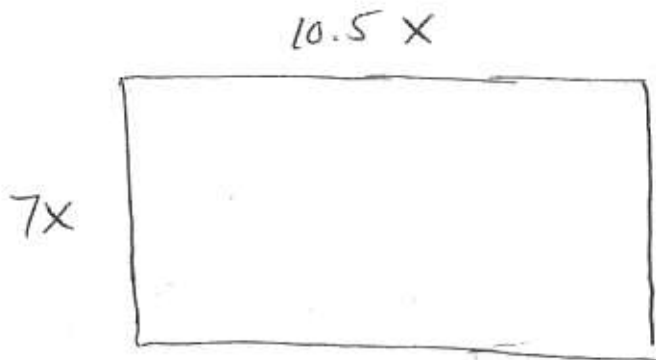
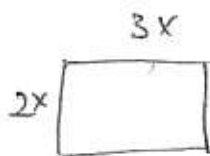


29



$$2 \cdot 3.5 = 7$$

$$3 \cdot 3.5 = 10.5$$

Amount of seeds is proportional to area

$$\frac{\text{Cost smaller}}{\text{Cost bigger}} = \frac{\text{Area smaller}}{\text{Area bigger}}$$

$$\frac{\$8}{\text{C}} = \frac{2x \cdot 3x}{7x \cdot 10.5x} = \frac{6}{73.5}$$

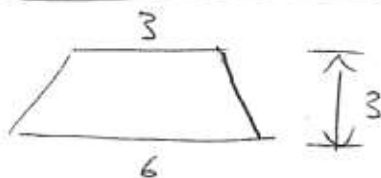
30

Trapezoid

$$A = \frac{1}{2}(b_1 + b_2)h$$

$$= \frac{1}{2}(3 + 6)(3)$$

$$A = \frac{1}{2}(9)(3) = 13.5$$



31

Kite

$$A = \frac{1}{2}d_1 d_2$$

$$d_1 = 6$$

$$(3 - (-3))$$

$$d_2 = 11$$

$$(6 - (-5))$$

$$A = \frac{1}{2}(6)(11)$$

$$A = 3(11)$$

$$A = 33$$