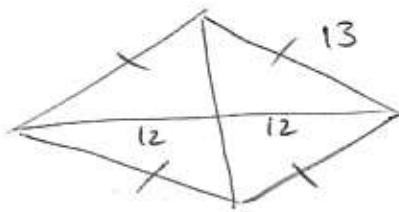


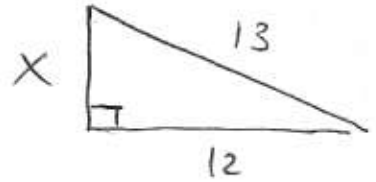
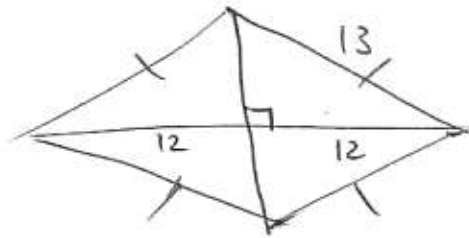
26

Area = ?



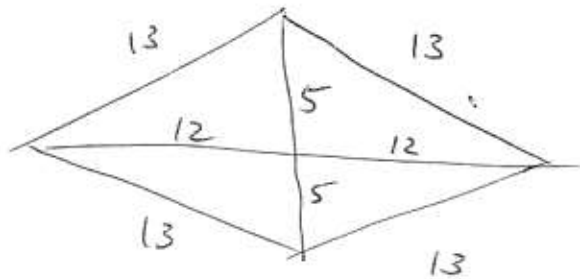
All four sides congruent, so it's a rhombus.

- Diagonals of rhombus are perpendicular



$$X = \sqrt{13^2 - 12^2}$$

$$X = 5$$



$$A = \frac{1}{2} d_1 d_2$$

$$d_1 = 12 + 12 = 24$$

$$d_2 = 5 + 5 = 10$$

$$A = \frac{1}{2} (24)(10)$$

$$A = 12(10) = \boxed{120}$$