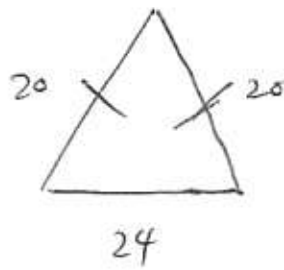
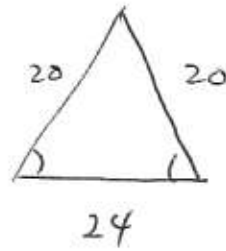


25



Isosc.  $\Delta$   
Thm

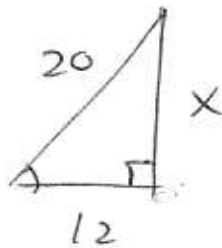


$$A = \frac{1}{2} b \cdot h$$

$$b = 24$$

$$h = ?$$

To figure out the height, split the triangle in half



Pythag. Thm

$$x^2 + 12^2 = 20^2$$

Solve for x

$$x = \sqrt{20^2 - 12^2}$$